



## ExCeL London Expansion Project

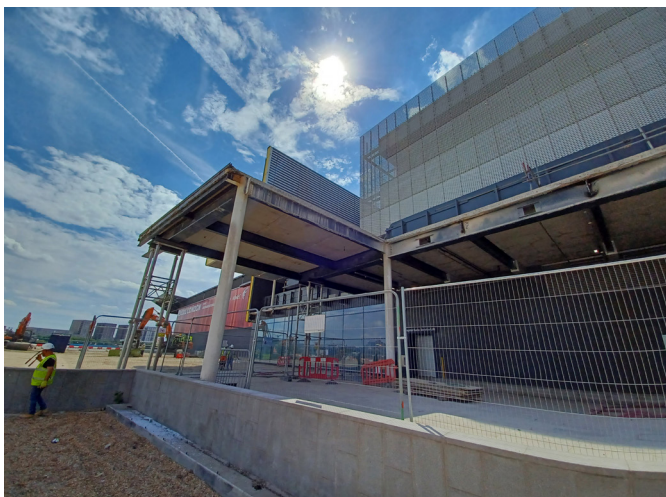
Community Newsletter

August 2022

### Project works

Main project works shall be taking place from 21<sup>st</sup> March 2022 until completion in 2024.

Throughout July our team has worked hard to complete the demolition works to the existing PPR deck by the Aloft Hotel as well as preparing the site for Formula E 2022 and the London Triathlon.



Our team will now be off-site until the 8th August where possession is handed back to the construction team.

On our return we will hit the ground running as we prepare for main piling works to commence in September 2022, marking the first permanent structure supporting the new building.

The piling shall be completed starting in the West and moving to the Eastern boundary, and will consist of over 1000 piles.

## Site Operating Hours

The site operates to the times agreed with the London Borough of Newham. Sometimes these hours will be extended to allow for an abnormal load, making an area safe, or other priority works.

In these cases the approved procedure to extend working hours will be followed, which includes notifying neighbours and other stakeholders.

<b>Monday - Friday</b>	08:00 – 18:00
<b>Saturday</b>	09:00 – 13:00
<b>Sunday</b>	No working
<b>Bank Holidays</b>	No working



## Community Engagement

On Monday 8th August, starting at 17:30, we will be hosting our monthly community meeting via Microsoft Teams, giving you the chance to hear about the development and meet the construction team.

For more information on upcoming community meetings and their invites, and to receive future project updates, please join our mailing list by contacting our Sustainability Manager at:

[james.roy@srm.com](mailto:james.roy@srm.com)

## Contact details for ExCeL London expansion project development works:

Tel. 0744 292 9532 - 24-hour contractor hotline

For other queries regarding the ExCeL London expansion project please contact:  
James Roy | [james.roy@srm.com](mailto:james.roy@srm.com) | 0777 668 7909